



# BUCKET ELEVATORS / BKBE

## TRANSPORT

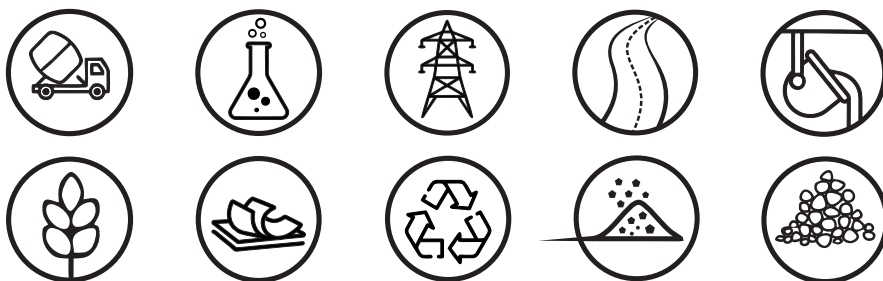


This is the most effective method of vertical transport of bulk materials, internal guidance of the return drum and covered gravity tension ensure maximum failure-free operation.

Bucket elevators, are used as a means of continuous vertical transport. They are characterized by cost-effective work, simple construction and easy operation. The moving buckets are filled with the transported material and emptied centrifugally. The buckets are attached to a belt that runs through the drums. The geometry and basic operating parameters are the result of many studies using DEM simulations.

The basic elements of a bucket conveyor are: supporting structure (return station; drive station), supporting structure (intermediate inspection part, intermediate transition part and guide), supporting linkage made of a conveyor belt, drive (geared motor).

### INDUSTRIES USING BUCKET ELEVATORS:



### PRODUCTION MATERIALS:



CARBON  
STEEL



HARDOX  
STEEL



STAINLESS  
STEEL



ACID RESISTANT  
STEEL

### FINISHING:



ATEX  
VERSION



ABRASION  
RESISTANT SURFACE

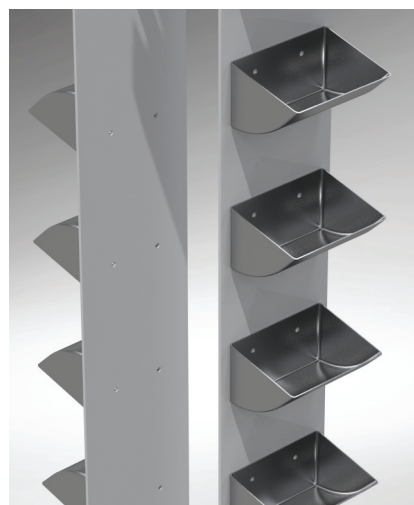
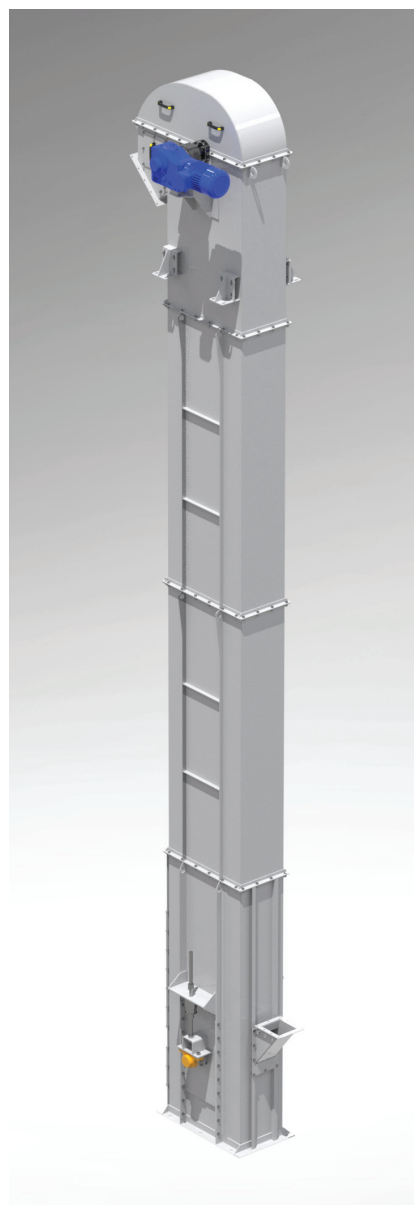


AMBIENT TEMPERATURE / MEDIUM TEMPERATURE:  
- 10 ... + 50 °C / - 10 ... + 400 °C



### ADVANTAGES OF OUR ELEVATORS:

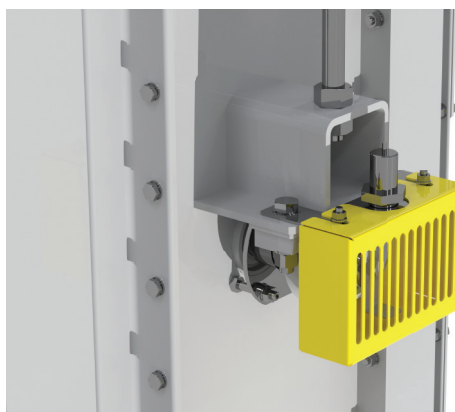
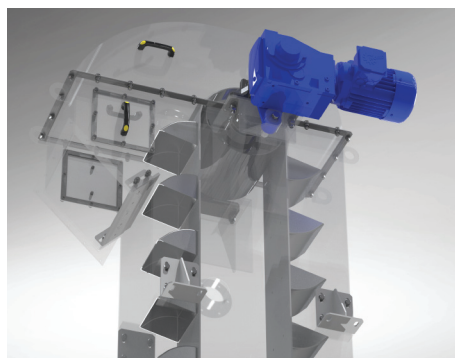
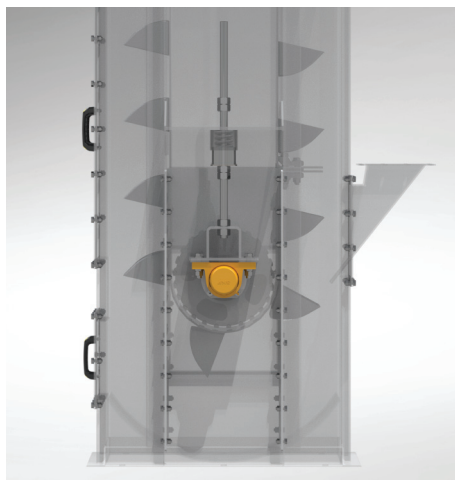
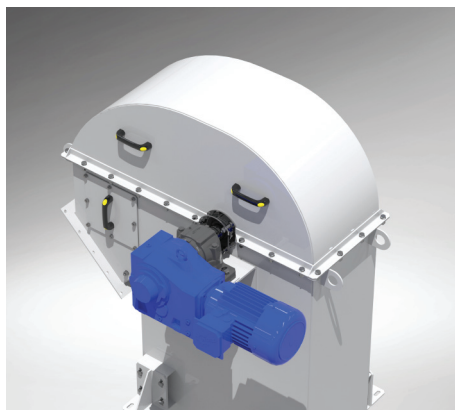
- greater efficiency by adjusting the speed, shape of the buckets and diameter of the drums
- no dust outside due to the return drum bearings being installed inside the shaft
- head adapted to the shape of the material stream, reducing abrasion
- no cable elongation thanks to the use of tapes with steel ropes according to a special pattern

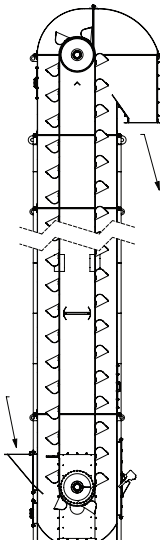
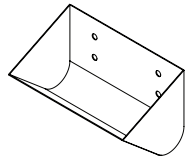
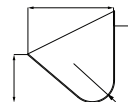
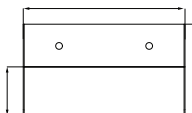
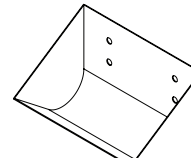
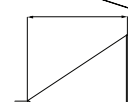
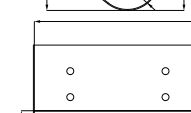
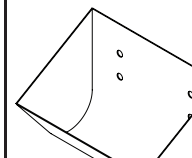
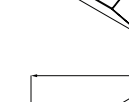
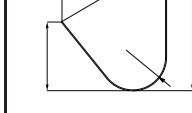


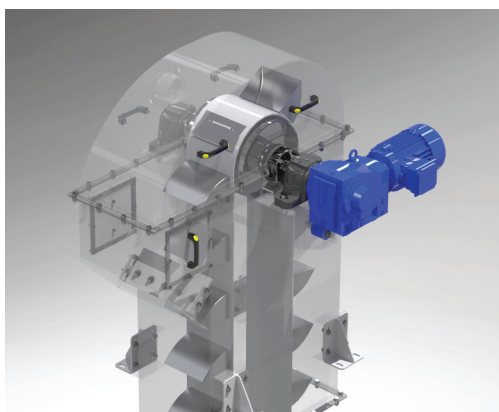


# BUCKET ELEVATORS / BKBE

## TRANSPORT



MODEL:	EFFICIENCY [m <sup>3</sup> / h]		
	TYPE B tile buckets	TYPE C medium buckets	TYPE D deep buckets
	  	  	  
BKBE 200	23	26	28
BKBE 250	33	37	41
BKBE 315	47	54	58
BKBE 355	56	64	69
BKBE 400	67	75	83
BKBE 450	78	90	102
BKBE 500	95	107	116
BKBE 630	---	150	164



**BIKO-SERWIS**  
www.bikoserwis.pl

**Biko-Serwis Sp. z o.o. Sp. K.**  
ul. Zakładowa 13  
26-052 Nowiny k. Kielc

www.bikoserwis.pl  
e-mail: biuro@bikoserwis.pl  
phone: +48 (0-41) 315 30 20

NIP: 656-100-23-24  
REGON: 290497085  
KRS: 0000388890