



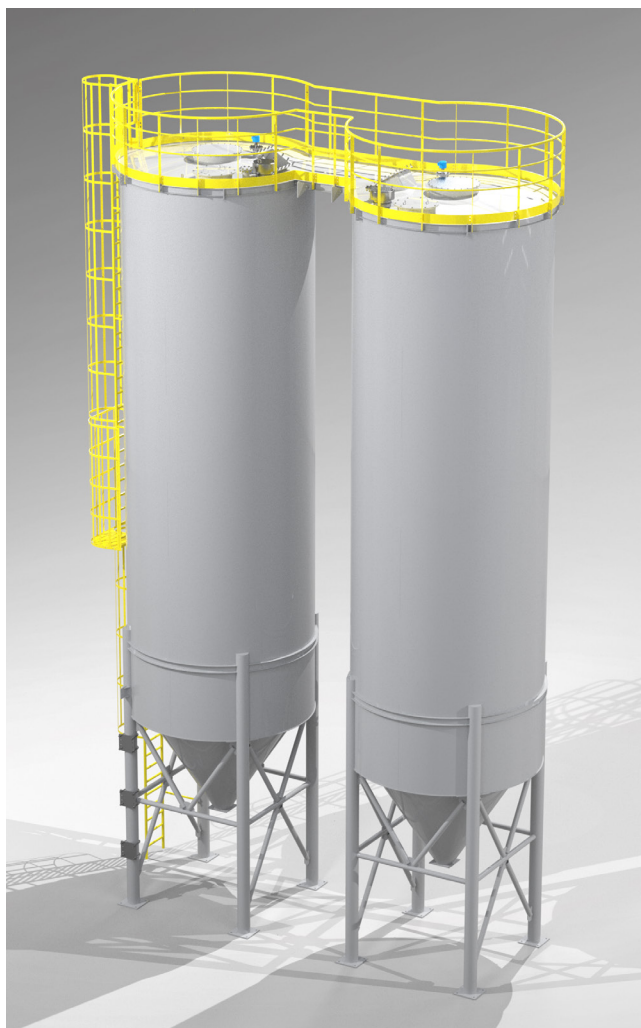
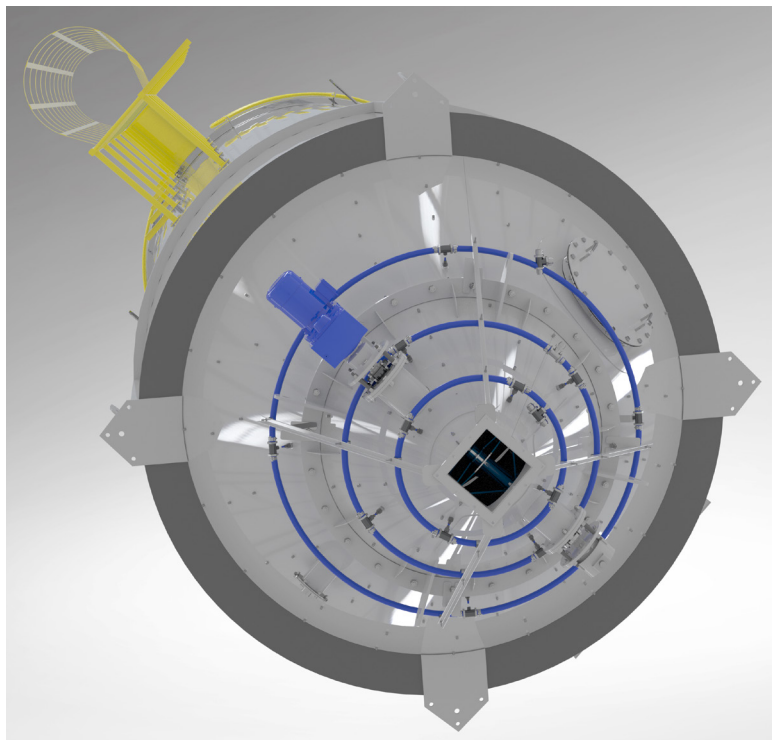
# STEEL SILO BKSS

## STORAGE



BIKO-SERWIS is a manufacturer of steel silos and supporting structures adapted to them, and a leading manufacturer in Poland of silos with a small cone angle, which consists of modular elements.

Steel silos are primarily used to store materials and raw materials, both finished and semi-finished products. These are devices used in most industries and production.



### INDUSTRY TYPES WHERE STEEL SILOS ARE USED:



CEMENT  
& LIME  
INDUSTRY



CHEMICAL  
& PETROCHEMICAL  
INDUSTRY



LIMESTONE  
& GYPSUM  
INDUSTRY



PLASTICS  
& PACKAGING  
INDUSTRY



ENVIRONMENT  
PROTECTION  
INDUSTRY



ENERGETIC  
& FUEL  
INDUSTRY



AGGREGATE  
& MINING  
INDUSTRY



CELLULOSE  
& PAPER  
INDUSTRY



FOOD &  
AGRICULTURE  
INDUSTRY



CONSTRUCTION  
& ROAD  
INDUSTRY



METALLURGY  
& GLASS  
INDUSTRY



**BIKO-SERWIS**  
[www.bikoserwis.pl](http://www.bikoserwis.pl)

**Biko-Serwis Sp. z o.o. Sp. K.**  
ul. Zakładowa 13  
26-052 Nowiny k. Kielc

[www.bikoserwis.pl](http://www.bikoserwis.pl)  
e-mail: [biuro@bikoserwis.pl](mailto:biuro@bikoserwis.pl)  
phone: +48 (0-41) 315 30 20

NIP: 656-100-23-24  
REGON: 290497085  
KRS: 0000388890



# STEEL SILO BKSS

## STORAGE



The production of steel tanks is an extremely important area of industry that plays a key role in storing and transporting various substances. The production process of BIKO-SERWIS steel tanks begins with their careful design by the Engineering and Design Department. Engineers take into account all parameters such as capacity, pressure, temperature and the type of substances that will be stored. The project must also meet all standards and regulations regarding safety and compliance with industrial and construction standards. Then the process of cutting and forming the steel sheet begins. Advanced technologies and modern machinery allow high precision in the production of tank elements. The individual prefabricated elements are then joined to create the tank body. The welds are carefully made, ensuring the durability and tightness of the structure. After assembling the body and individual cargoes of the tank, its surface treatment begins. Grinding and polishing not only improves aesthetics, but also protects welds against corrosion. Additionally, the tanks can be equipped with thermal insulation, which helps maintain a stable temperature inside the tank. The next step is to install additional elements, such as safety valves or systems for monitoring stored substances. Depending on the purpose of the tank, various accessories can be used, adapted to the physico-chemical properties of the stored substance. The entire production process of steel tanks is subject to strict quality controls to ensure that the finished product meets all standards and expectations of our customers.

### PRODUCTION MATERIALS:



CARBON  
STEEL



STAINLESS  
STEEL



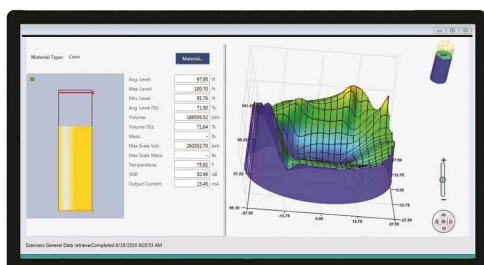
APPLICATION  
OF INTERNAL  
ABRASION RESISTANT  
SURFACES



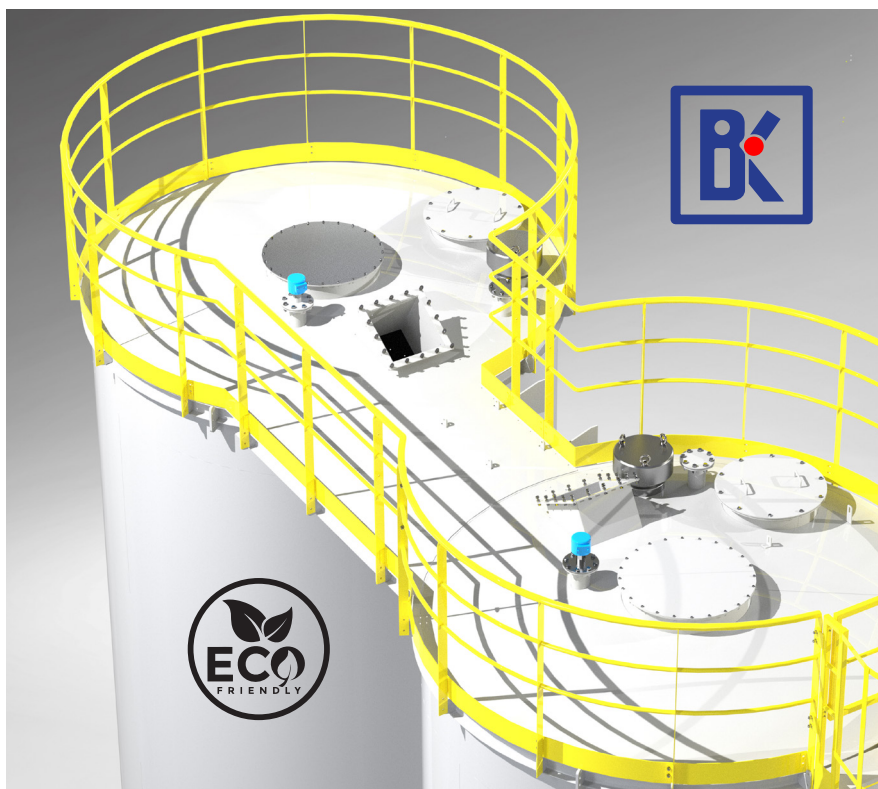
EXTERNAL INSULATION  
WITH MINERAL WOOL  
AND CLADDING



PAINTING: EPOXY PRIMER,  
POLYURETHANE PAINTS  
(C3 - C5, RAL PALETTE)



Correct storage of products and semi-finished products is a technologically necessary process that helps maintain their high quality. Determining the filling level of a silo is a key issue related to storing various types of material in them. A rational storage policy is a key element of the functioning of every industrial installation. By knowing how full the silo is, we will avoid overfilling it.





# STEEL SILO BKSS

## STORAGE



### PRODUCT PROPERTIES:



**CUT ELEMENTS  
PLASMA AND WELDED**



**PREFABRICATED,  
TRANSPORTED  
AND ASSEMBLED**  
IN THE LOCATION INDICATED  
BY THE CUSTOMER



**EASY AND SIMPLE  
ASSEMBLY**



**TANK JACKET THICKNESS**  
ZBIORNIKA: 4~25MM



**SILO VOLUME:** < 600 M3  
(STANDARD: < 250 M3)



**DIMENSIONS**  
OF STANDARD SILOS:  
LENGHT: < 45 000 MM  
DIAMETER: < 4 200 MM



**OPERATING TEMP:**  
-10 °C to +60 °C



**PRESSURE  
TOLERANCE:**  
CALCULATED INDIVIDUALLY

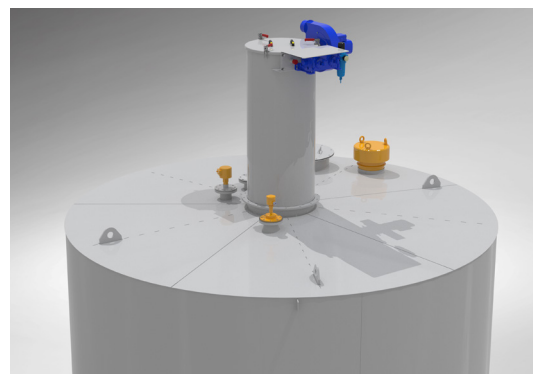
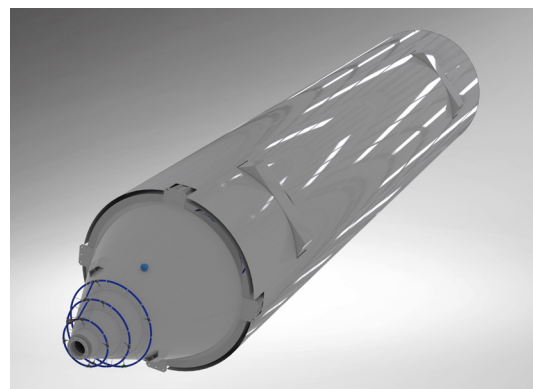
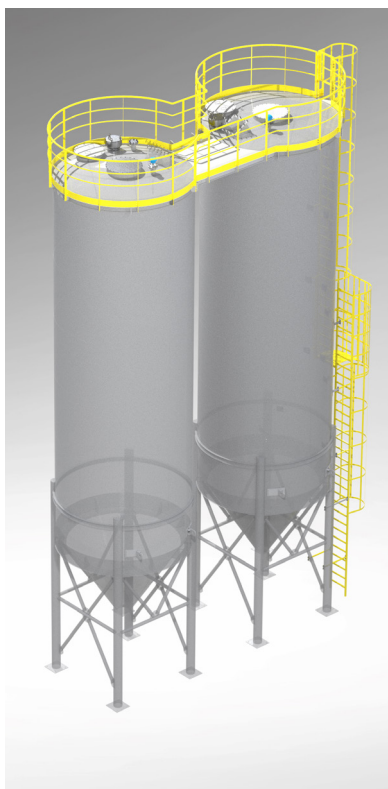
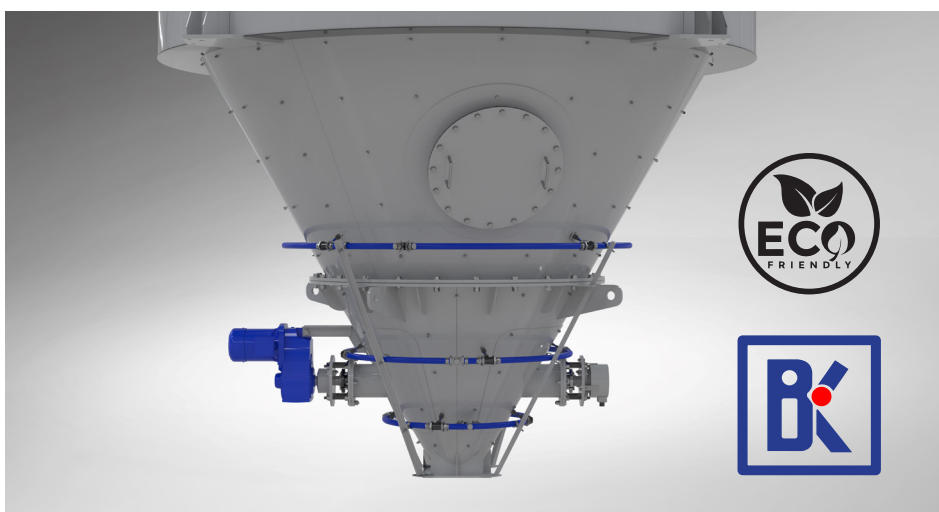


**CONTROL AND MEASURING  
INSTRUMENTS, PROCESS  
AUTOMATION**

Smaller silos can also act as buffer tanks from where industrial installations collect semi-finished products necessary for continuous operation of the technological line.

Silos intended for storing hygroscopic materials, such as cement, flour, artificial fertilizers, fine coal, industrial ashes, lime or some fine-grained or fibrous raw materials, and plastics, usually have specially adapted geometry and texture of the walls. The inclination of the walls of the discharge hopper is selected to make emptying the tank as easy as possible.

Depending on the material stored in the silo, these tanks can be equipped with various types of BKDU unloading support systems, also known as deagglomerators.



**BIKO-SERWIS**  
[www.bikoserwis.pl](http://www.bikoserwis.pl)

**Biko-Serwis Sp. z o.o. Sp. K.**  
ul. Zakładowa 13  
26-052 Nowiny k. Kielc

[www.bikoserwis.pl](http://www.bikoserwis.pl)  
e-mail: [biuro@bikoserwis.pl](mailto:biuro@bikoserwis.pl)  
phone: +48 (0-41) 315 30 20

NIP: 656-100-23-24  
REGON: 290497085  
KRS: 0000388890





# STEEL SILO BKSS

## STORAGE



APPROXIMATE VOLUME		SILO DIAMETER								
		2,0 m	3,0 m	4,0 m	5,0 m	6,0 m	7,0 m	8,0 m	9,0 m	10,0 m
SILO HEIGHT	4,0 m	10 m <sup>3</sup>	18 m <sup>3</sup>	25 m <sup>3</sup>	---	---	---	---	---	---
	8,0 m	22 m <sup>3</sup>	46 m <sup>3</sup>	75 m <sup>3</sup>	107 m <sup>3</sup>	139,0 m <sup>3</sup>	170 m <sup>3</sup>	---	---	---
	12,0 m	---	74 m <sup>3</sup>	125 m <sup>3</sup>	186 m <sup>3</sup>	253 m <sup>3</sup>	325 m <sup>3</sup>	397 m <sup>3</sup>	470 m <sup>3</sup>	539 m <sup>3</sup>
	24,0 m	---	---	276 m <sup>3</sup>	421 m <sup>3</sup>	592 m <sup>3</sup>	785 m <sup>3</sup>	1 000 m <sup>3</sup>	1 233 m <sup>3</sup>	1 481 m <sup>3</sup>



**BIKO-SERWIS**  
www.bikoserwis.pl

