



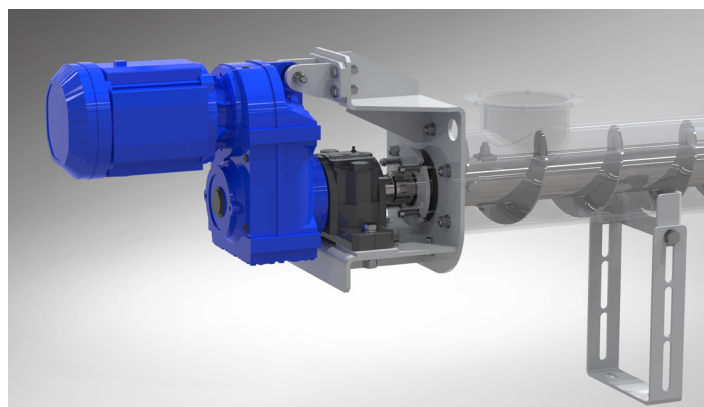
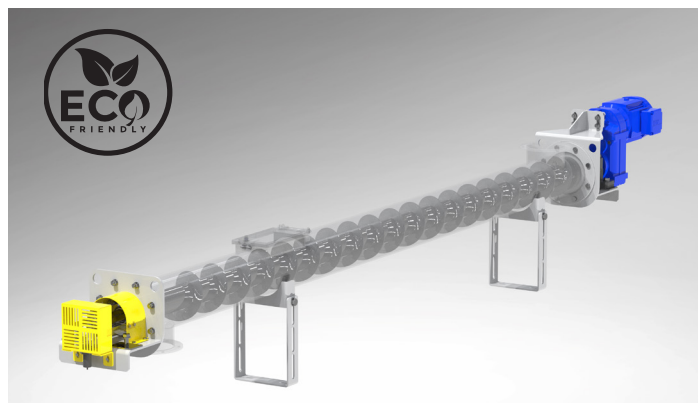
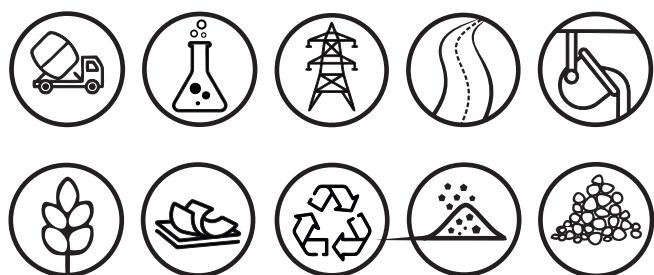
SCREW CONVEYORS / BKSC

TRANSPORT



Screw conveyors are an important element of many production processes. They are used to move materials from one place to another, often in a continuous flow, over relatively short distances, between devices that are components of a production or industrial installation.

Screw transport is considered one of the most reliable methods used in manufacturing, industrial and agricultural industries. These devices are widely used in the chemical, construction, agricultural, energy and waste management industries.



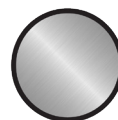
PRODUCTION MATERIALS:



CARBON
STEEL



HARDOX
STEEL

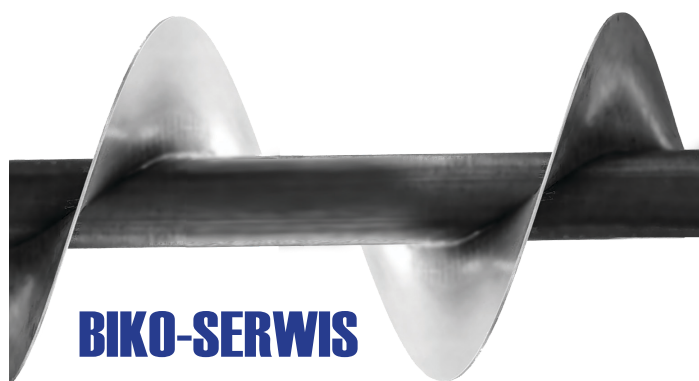
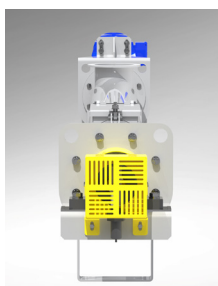
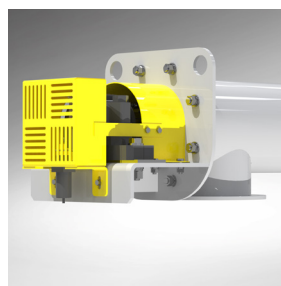


STAINLESS
STEEL



ACID-RESISTANT
STEEL

The combination of high-quality materials and simple construction results in reliability. Conveyors made of stainless steel are resistant to corrosive factors, making them durable and long-lasting. For demanding transport processes of semi-finished products or abrasive raw materials, the screw coils are made of steel with increased abrasion resistance, e.g. hardox steel.



The BKSC screw conveyor manufactured by Biko-Serwis is intended for the transport of dust and all kinds of loose and finely divided materials, such as: cement, alternative fuels, pea and fine coal, seeds, feed, etc.



BIKO-SERWIS
www.bikoserwis.pl

Biko-Serwis Sp. z o.o. Sp. K.
ul. Zakładowa 13
26-052 Nowiny k. Kielc

www.bikoserwis.pl
e-mail: biuro@bikoserwis.pl
phone: +48 (0-41) 315 30 20

NIP: 656-100-23-24
REGON: 290497085
KRS: 0000388890



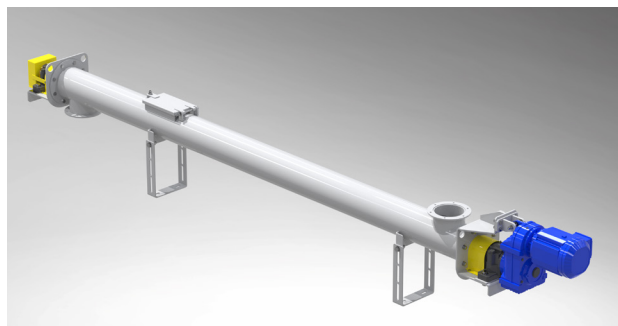
SCREW CONVEYORS / BKSC

TRANSPORT



Screw conveyors are made in two basic versions: trough and tubular. There are also two-shaft versions or those adapted to transport medium at high temperatures.

In the reversible version, the screw conveyor allows material to be moved in both directions. The direction of material movement is changed by changing the direction of rotation of the screw shaft. Biko-Serwis produces innovative screw conveyors (vertical and horizontal) with high efficiency and low energy demand.



RECOMMENDED WORK CONDITIONS:



AMBIENT TEMPERATURE:
- 10 / + 50 °C



MEDIUM TEMPERATURE:
- 10 / + 400 °C

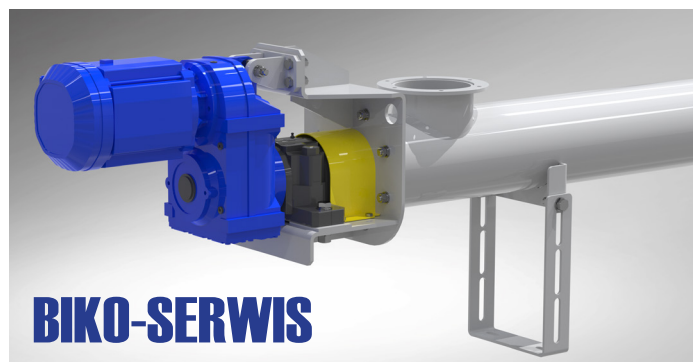
FINISHING OPTIONS:



ATEX
VERSION

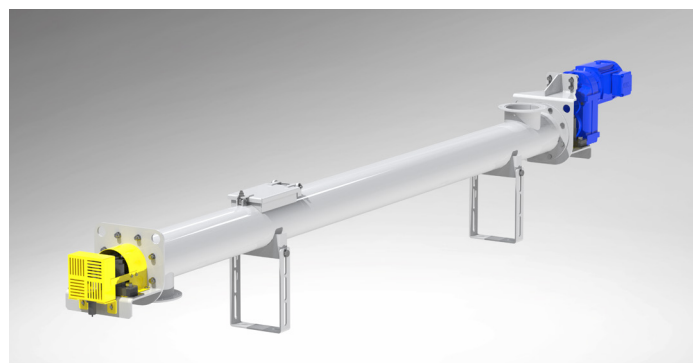
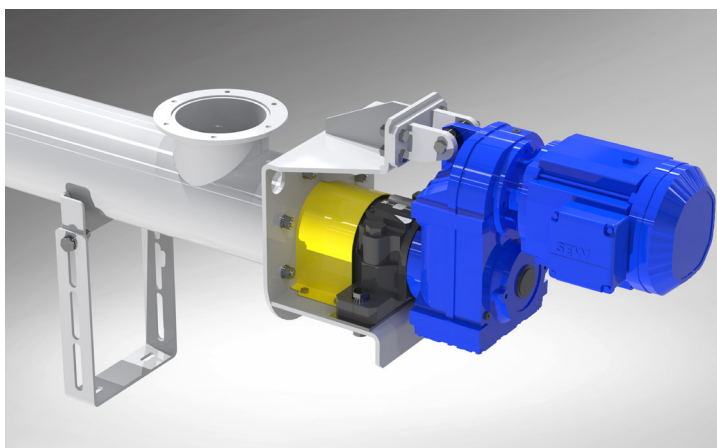


ABRASION - RESISTANT
SURFACE



An additional advantage of screw conveyors is the simplicity of their installation, the ability to work in difficult conditions and low operating costs. We produce screw conveyors only from high-quality materials. We offer a wide range of sizes and designs, which allows us to meet the needs of almost every industry. Thanks to our experience and knowledge, we can help you find the perfect solution for your production and industrial installation.

Each such structure has a screw inside. Its shape resembles a ribbon or a set of blades - depending on the device model. This element is most often attached to the shaft, although in some models this part is not present. The circular movement of the ribbon or blades causes the load to move in the intended direction.



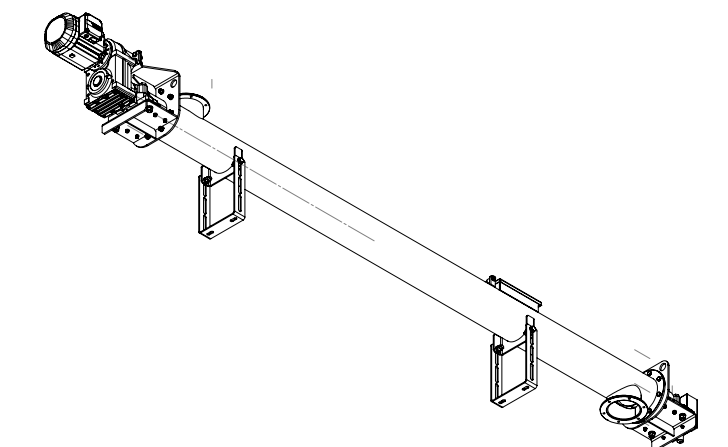
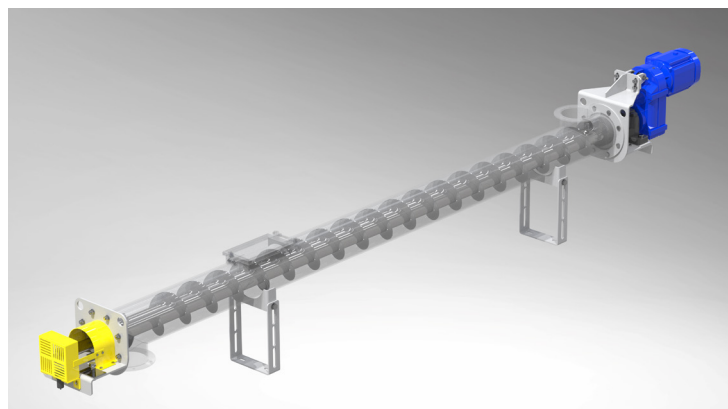
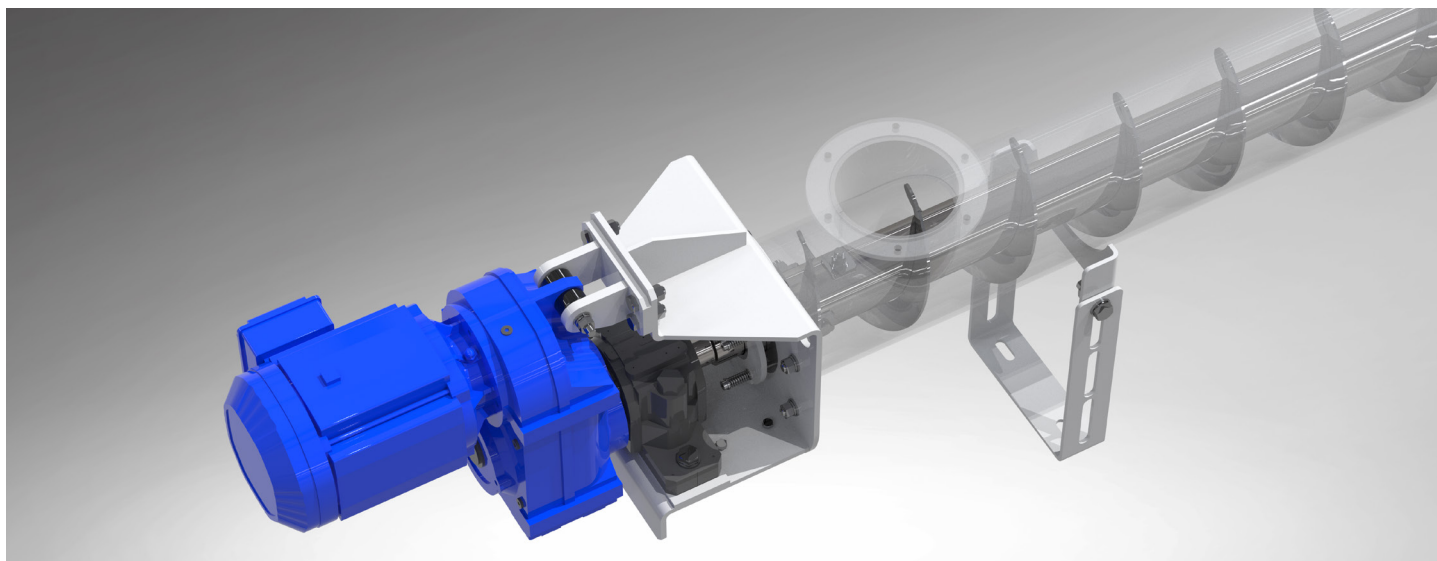
Screw conveyors can collect material transported from hoppers, unloading hoppers, tanks or other conveyors and feed it to other unloading devices or silos and tanks. Screw conveyors allow material to be transported horizontally, at an angle or even completely vertically.

Biko-Serwis is able to design, conduct digital simulations of the process using DEM methods, produce and test prototypes of screw conveyors in order to optimize them in terms of energy consumption or achieve the required performance and operating characteristics. We also offer the possibility of regenerating existing devices.



SCREW CONVEYORS / BKSC

TRANSPORT



CONVEYOR MODEL:	ROTATION SPEED:	APPROPRIATE EFFICIENCY:
BKSC160	40 rpm	2,3 m3/h
	55 rpm	3,2 m3/h
	80 rpm	4,6 m3/h
BKSC 200	40 rpm	4,5 m3/h
	55 rpm	6,2 m3/h
	80 rpm	9,0 m3/h
BKSC 315	40 rpm	17,7 m3/h
	55 rpm	24,3 m3/h
	80 rpm	35,3 m3/h
BKSC 400	40 rpm	36,2 m3/h
	55 rpm	49,7 m3/h
	80 rpm	72,3 m3/h
BKSC 500	40 rpm	70,7 m3/h
	55 rpm	97,1 m3/h
	80 rpm	141,3 m3/h
BKSC 630	40 rpm	141,3 m3/h
	55 rpm	194,3 m3/h
	80 rpm	282,7 m3/h



BIKO-SERWIS
www.bikoserwis.pl

Biko-Serwis Sp. z o.o. Sp. K.
ul. Zakładowa 13
26-052 Nowiny k. Kielc

www.bikoserwis.pl
e-mail: biuro@bikoserwis.pl
phone: +48 (0-41) 315 30 20

NIP: 656-100-23-24
REGON: 290497085
KRS: 0000388890