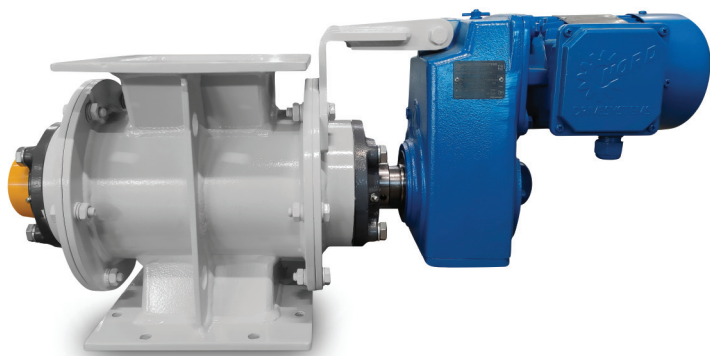




ROTARY VALVES / BKR

TRANSPORT

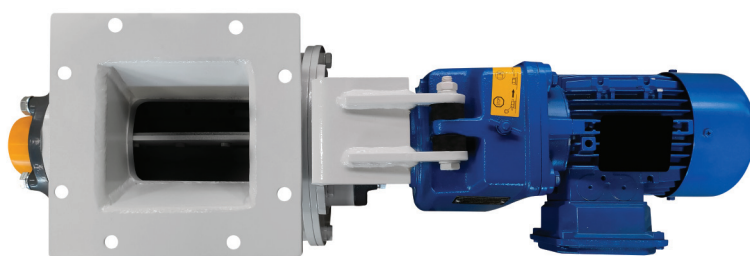


The rotary feeder is a device designed for receiving and dispensing loose and fine materials. It can be used as a closure for bag filters, silos and cyclones. The material is poured through the feed pipe, then the material is dispensed via a rotating rotor with blades. The material leaves the dispenser through the discharge port.

We would like to mention that many regions of Poland use different nomenclature for rotary valve. There are common terms such as cell dispensers, rotary cells, star valves, rotary feeders, rotary locks or turnstiles.

Rotary feeders are installed under silos, transport devices, filters and cyclones as well as in pneumatic transport installations. We produce rotary dispensers with high operating parameters, tailored to the needs of our customers. Turned parts are prepared on numerically controlled machines, welding takes place on automatic lines, and finished products are painted in a painting and drying booth, guaranteeing high quality protective coatings.

Rotary feeders are widely used in industry. Technological installations for transporting bulk materials, from granulates to the dusty fraction of the material, require the use of rotary feeders in the transmission, dosing or storage processes. Rotary feeders are installed under silos, transport devices, filters and cyclones as well as in pneumatic transport installations.



PRODUCTION MATERIALS:



CARBON
STEEL



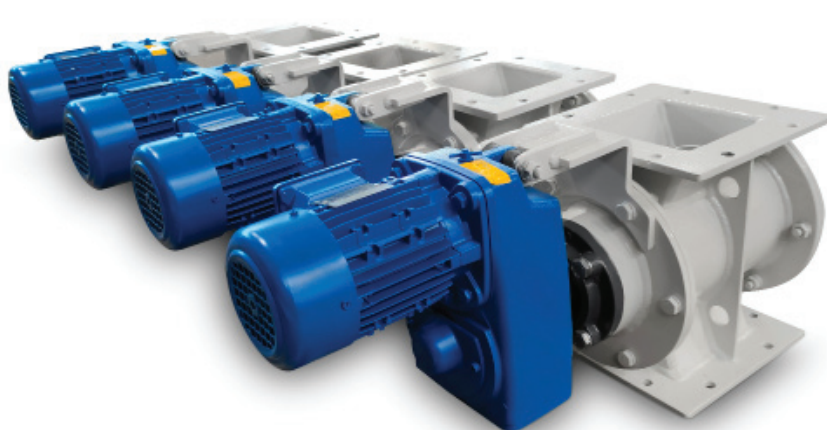
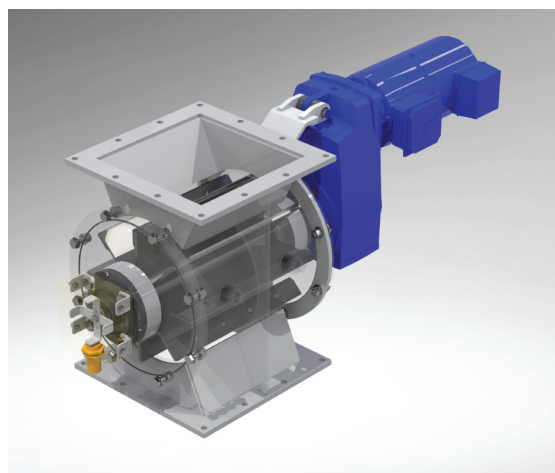
HARDOX
STEEL



STAINLESS
STEEL



ACID RESISTANT
STEEL



BIKO-SERWIS
www.bikoserwis.pl

Biko-Serwis Sp. z o.o. Sp. K.
ul. Zakładowa 13
26-052 Nowiny k. Kielc

www.bikoserwis.pl
e-mail: biuro@bikoserwis.pl
phone: +48 (0-41) 315 30 20

NIP: 656-100-23-24
REGON: 290497085
KRS: 0000388890



ROTARY VALVES / BKRv

TRANSPORT



FINISHING OPTIONS:



ATEX*
VERSION



ABRASION-RESISTANT
SURFACE



AMBIENT TEMPERATURE:
- 10 / + 50 °C



DIFFERENTIAL
PRESSURE (IN / OUT)
MAX 0,3 bar

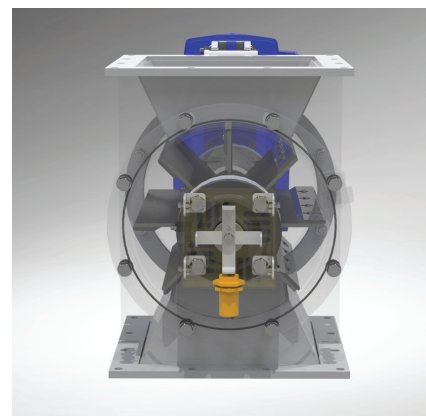
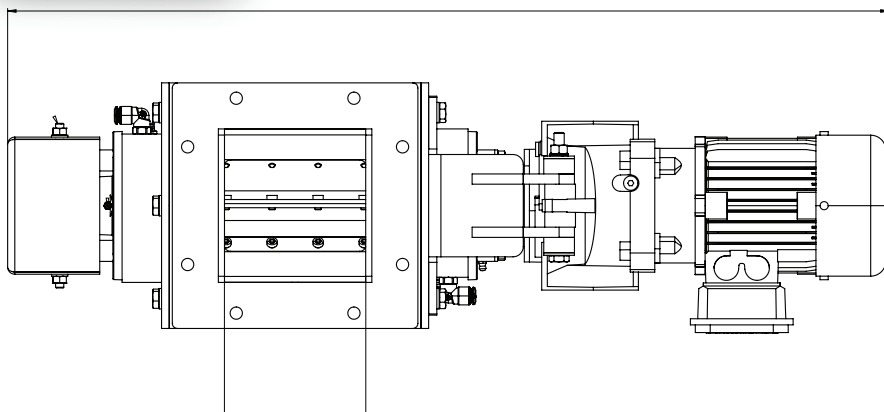


MEDIUM TEMPERATURE:
- 10 / + 400 °C



* Directive 94/9/EC, EN 15089

BKRv rotary feeders in the EX version manufactured by BIKO-SERWIS are certified as a protective element in explosion isolation systems for loose materials with explosive properties in dust explosion hazard conditions. The feeder protects the transport installation against flame propagation and explosion pressure up to 1MPa. The bearings in this type of feeder are moved away from the body, which protects them against damage in the event of an explosion. The motor is equipped with a brake, which prevents the dispenser from turning after being turned off in the event of an explosion. It can operate in the dust explosion zone 21 and 22 outside the housing and in zone 20-22 for the internal chamber.



SIZE OF THE ROTARY FEEDER:			EFFICIENCY [m ³] / POWER [kW] FOR:		
MODEL:	COLLAR INTERNAL SIZE:	DEVICE HEIGHT:	10 rpm	20 rpm	30 rpm
BKRv 150	150 mm	273 mm	1,2 / 0,18	2,3 / 0,25	3,5 / 0,55
BKRv 200	200 mm	323 mm	3,0 / 0,25	5,9 / 0,25	8,9 / 0,75
BKRv 250	250 mm	396 mm	6,5 / 0,37	12,0 / 0,37	18,0 / 0,75
BKRv 300	300 mm	440 mm	9,8 / 0,37	19,6 / 0,55	29,5 / 1,10
BKRv 400	400 mm	530 mm	24,5 / 0,75	49,1 / 1,50	73,6 / 1,50
BKRv 500	500 mm	650 mm	37,7 / 1,10	75,5 / 1,10	113,2 / 2,20



BIKO-SERWIS
www.bikoserwis.pl

Biko-Serwis Sp. z o.o. Sp. K.
ul. Zakładowa 13
26-052 Nowiny k. Kielc

www.bikoserwis.pl
e-mail: biuro@bikoserwis.pl
phone: +48 (0-41) 315 30 20

NIP: 656-100-23-24
REGON: 290497085
KRS: 0000388890